

# A P P A R A T U S



AGED BRASS / PEWTER SUEDE AND SATIN

## STARLET : SCONCE

REFERENCE

ANTENNAE  
VERDURA 1960

COMPOSITION

BRASS ARMATURE  
TONAL SUEDE AND SATIN SHADE

# A P P A R A T U S



TARNISHED SILVER / SEPIA SUEDE AND SATIN

AGED BRASS / PEWTER SUEDE AND SATIN

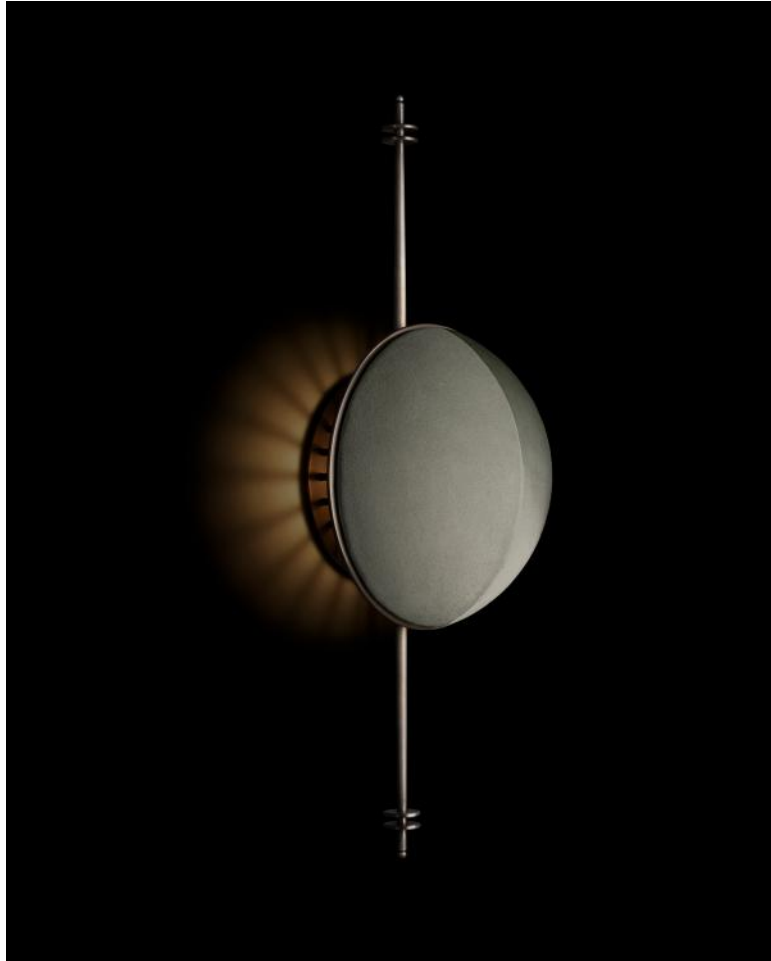
AGED BRASS / BRONZE SUEDE AND SATIN

A P P A R A T U S



AGED BRASS / SEPIA SUEDE AND SATIN

A P P A R A T U S



TARNISHED SILVER / ICE SUEDE AND SATIN



AGED BRASS / SEPIA SUEDE AND SATIN

A P P A R A T U S

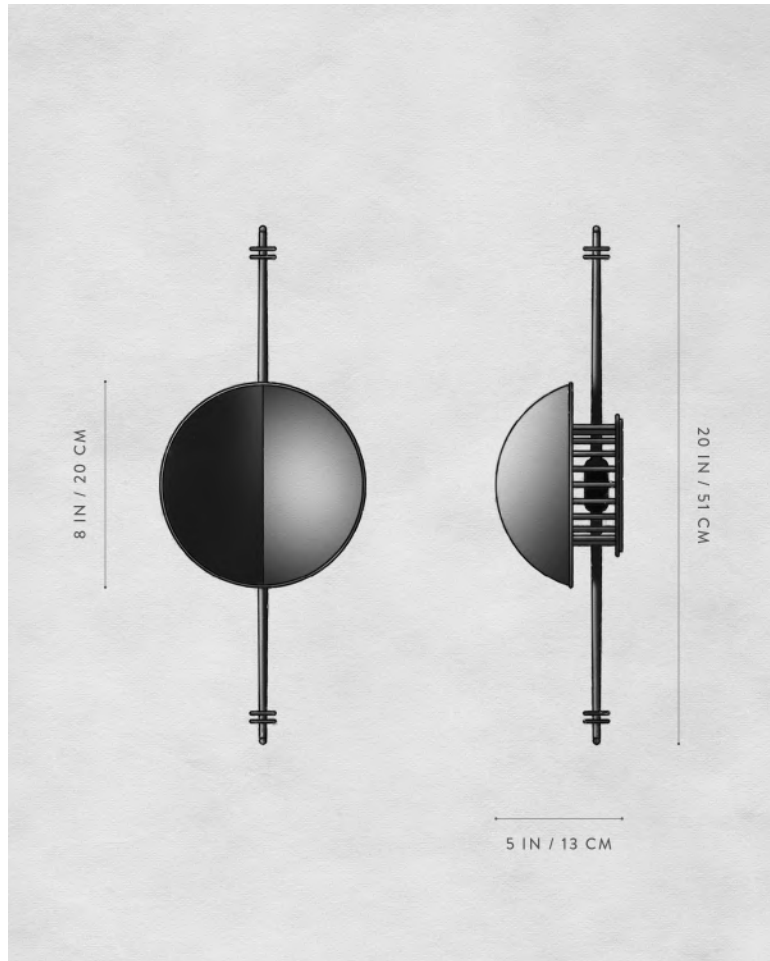


TARNISHED SILVER / JUNIPER SUEDE AND SATIN



TARNISHED SILVER / JUNIPER SUEDE AND SATIN

# A P P A R A T U S



## STARLET : SCONCE

### DIMENSIONS

20 H, 8 W, 5 D IN  
51 H, 20 W, 13 D CM  
APPROX. 7 LBS / 3 KG

### WEIGHT

### PRICE

FROM \$5500

### VOLTAGE

120-240  
ETL / CB / CE / UKCA

### LAMPING

MAX 7W

### BULB INCLUDED

2200-2700K WARM DIM  
120V : GU10, 4W  
240V : GU10, 5.5W

### DEPOSIT

50% UPON ORDER

### BALANCE

DUE PRIOR TO SHIPPING

### LEAD TIME

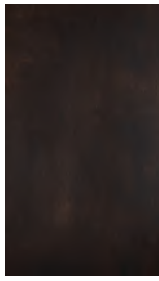
PLEASE REFER TO WEBSITE

FINISHED AND ASSEMBLED BY HAND IN NY  
DOMESTIC AND IMPORTED COMPONENTS

# A P P A R A T U S



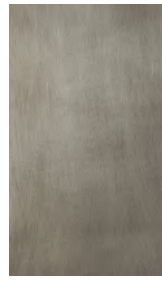
AGED BRASS



OIL-RUBBED BRONZE



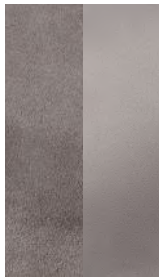
BLACKENED BRASS



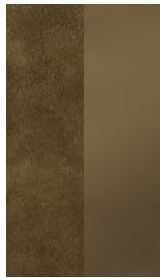
TARNISHED SILVER



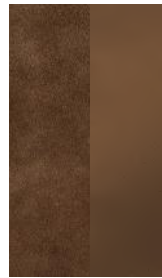
ICE



PEWTER



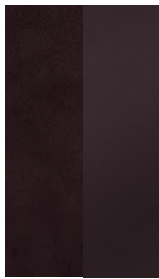
BRONZE



SEPIA



JUNIPER



PLUM



BLACK

METAL

STARLET : SCONCE

AGED BRASS [WAXED]  
OIL-RUBBED BRONZE [WAXED]  
BLACKENED BRASS [WAXED]  
TARNISHED SILVER [LACQUERED] ADD 35%

SUEDE / SATIN

ICE  
PEWTER  
BRONZE  
SEPIA  
JUNIPER  
PLUM  
BLACK