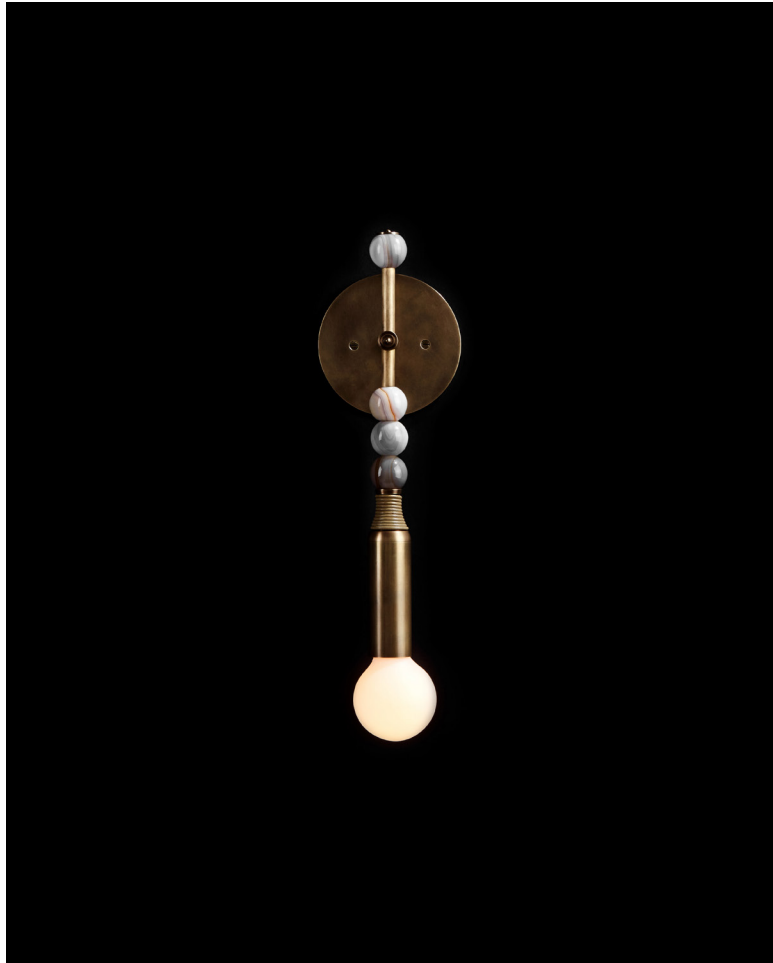


# A P P A R A T U S



AGED BRASS / AGATE / TAN LEATHER

## TALISMAN : 1 SCONCE

REFERENCE

STATUES OF PERSEPOLIS  
BIJOUX DU MAROC

COMPOSITION

SEMI-PRECIOUS STONES  
BRASS ARMATURE  
LEATHER BINDING

A P P A R A T U S

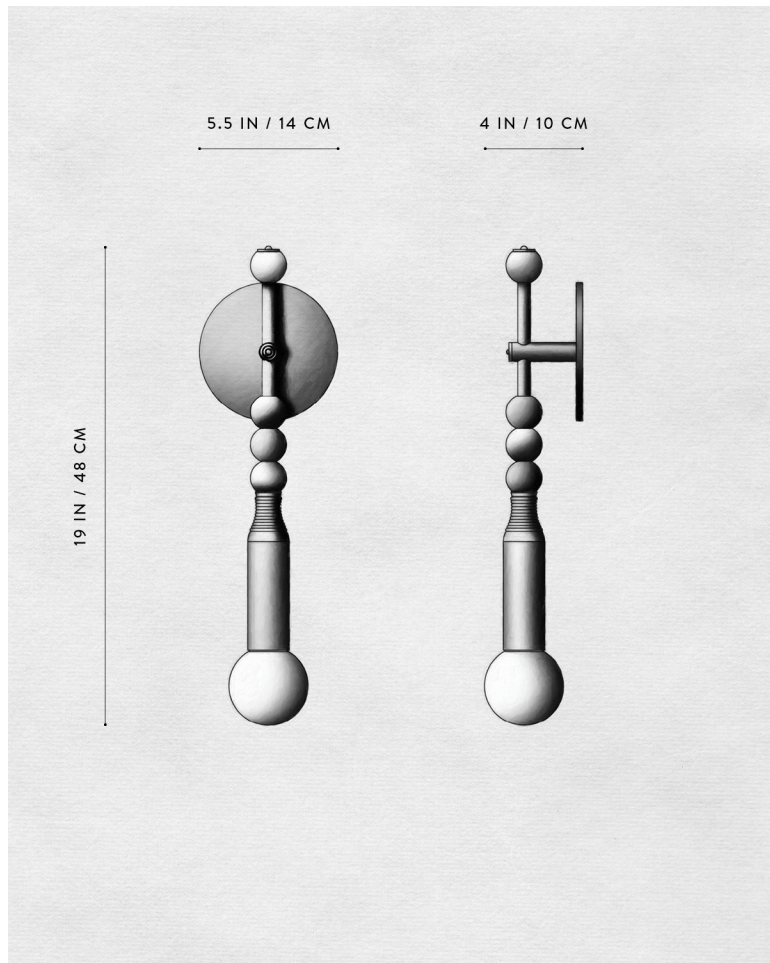


AGED BRASS / AGATE / TAN LEATHER



TARNISHED SILVER / JADE / COOL GRAY LEATHER

# A P P A R A T U S



TALISMAN : 1 SCONCE

DIMENSIONS

19 H, 5.5 W, 4 D IN

WEIGHT

48 H, 14 W, 10 D CM

PRICE

APPROX. 5 LBS / 2 KG

FROM \$2900

VOLTAGE

120-240

LAMPING

UL / CE

BULB INCLUDED

MAX 40W

6W DIMMABLE LED BULB

480 LUMENS

2500K

120V : E26 GLOBE LG : MATTE WHITE

240V : E27 GLOBE LG : MATTE WHITE

BULB LIFE

30,000 HOURS

DEPOSIT

50% UPON ORDER

BALANCE

DUE PRIOR TO SHIPPING

LEAD TIME

PLEASE REFER TO WEBSITE

FINISHED AND ASSEMBLED BY HAND IN NY  
DOMESTIC AND IMPORTED COMPONENTS

# A P P A R A T U S



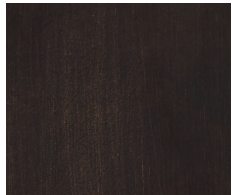
AGED BRASS



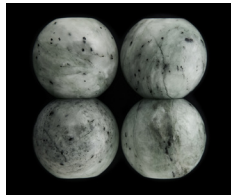
WHITE JADE



LEATHER - TAN



OIL-RUBBED BRONZE



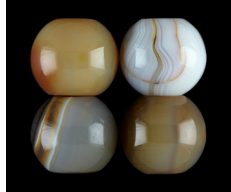
JADE



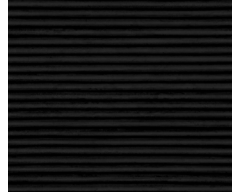
LEATHER - COOL GRAY



BLACKENED BRASS



AGATE



LEATHER - BLACK



TARNISHED SILVER



DESERT JASPER

METAL

STONE

LEATHER

TALISMAN : 1 SCONCE

AGED BRASS [WAXED]  
OIL-RUBBED BRONZE [WAXED]  
BLACKENED BRASS [WAXED]  
TARNISHED SILVER [LACQUERED] ADD 35%

WHITE JADE  
JADE  
AGATE  
DESERT JASPER

TAN  
COOL GRAY  
BLACK